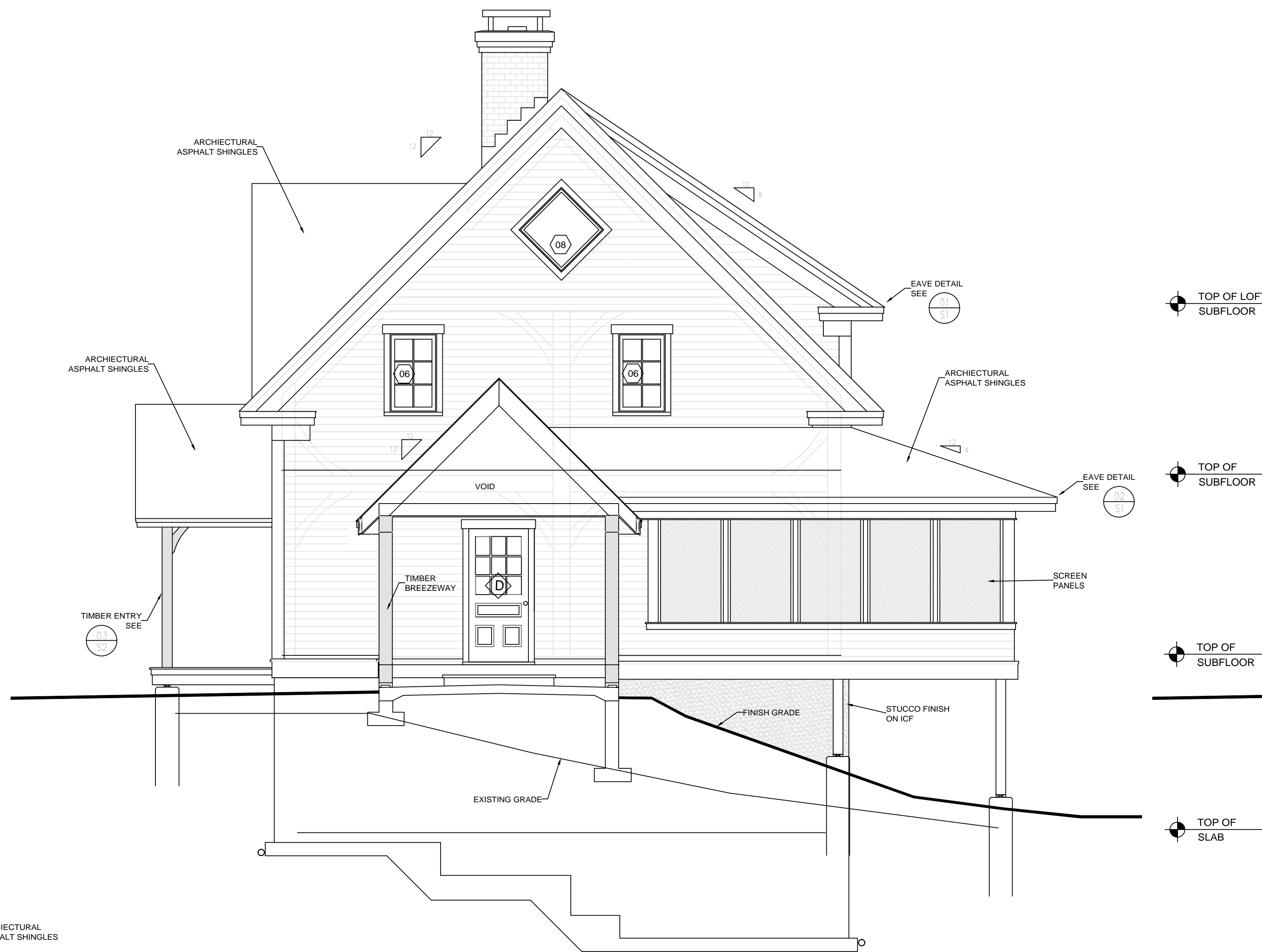


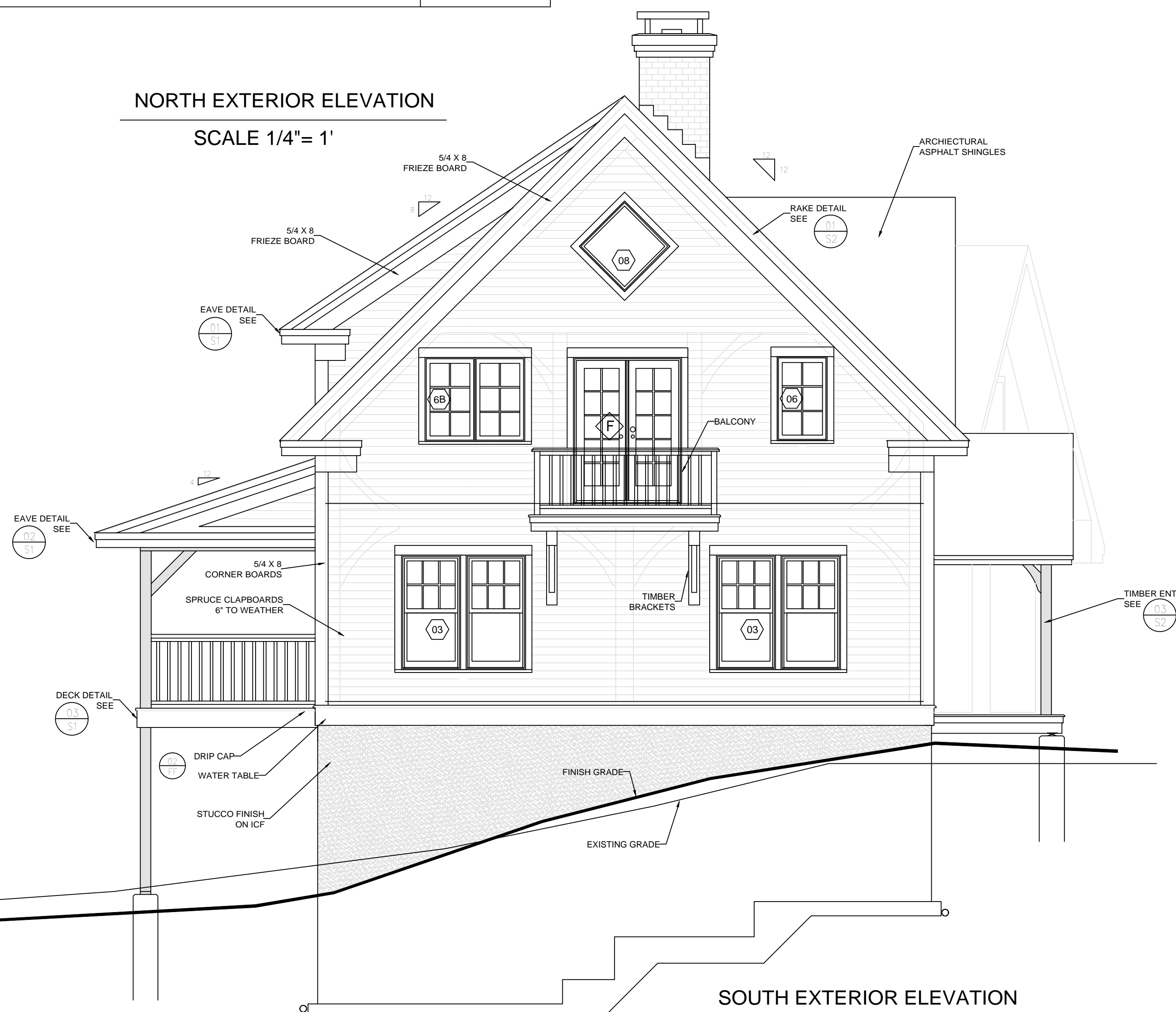


NORTH EXTERIOR ELEVATION
 SCALE 1/4" = 1'



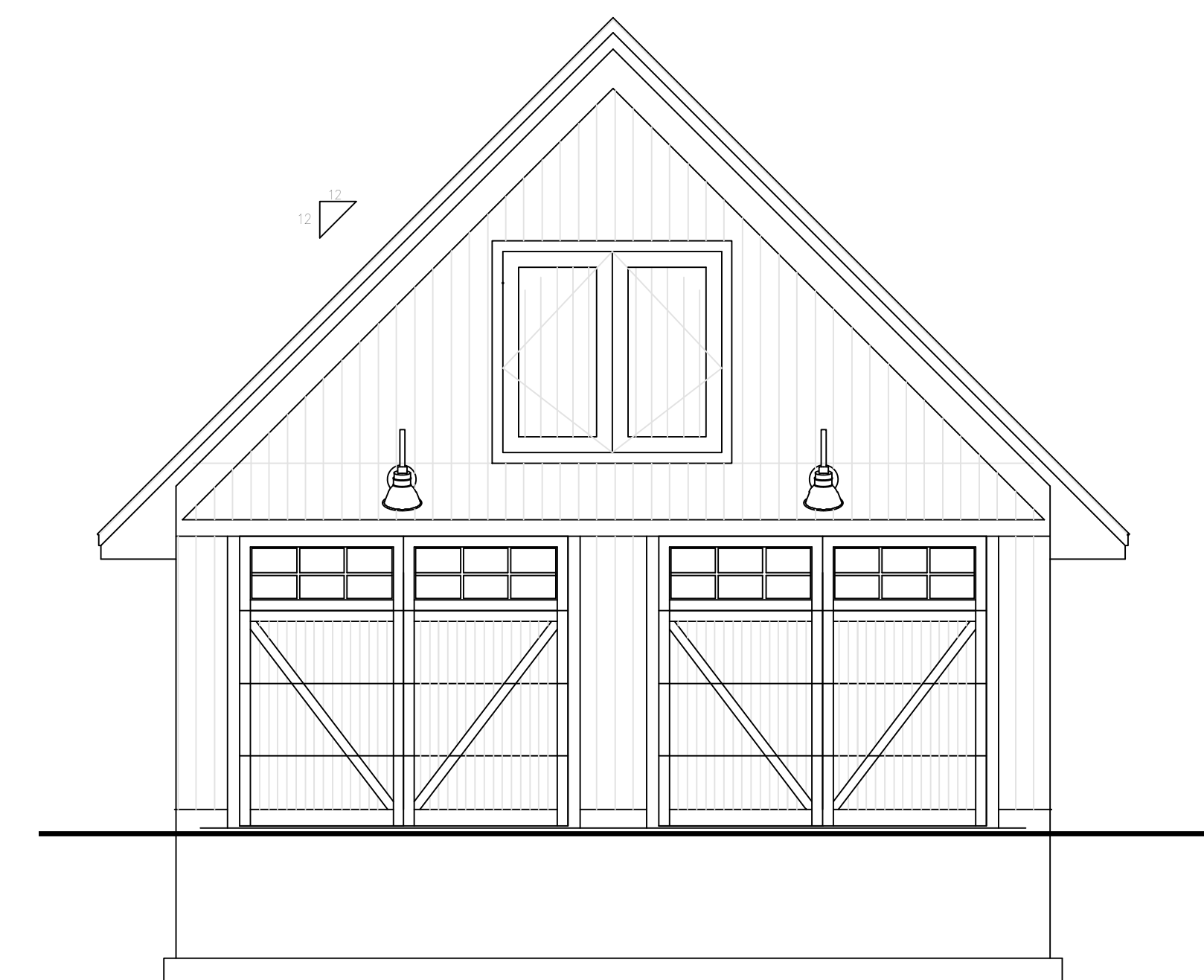
PARTIAL NORTH EXTERIOR ELEVATION
 SCALE 1/4" = 1'

TOP OF LOFT SUBFLOOR
 TOP OF SUBFLOOR
 TOP OF SUBFLOOR
 TOP OF SLAB



SOUTH EXTERIOR ELEVATION
 SCALE 1/4" = 1'

TOP OF LOFT SUBFLOOR
 TOP OF SUBFLOOR
 TOP OF SUBFLOOR
 TOP OF SLAB



EAST GARAGE ELEVATION
 SCALE 1/4" = 1'